



Product Press Release

Contacts:

April Johnson
Apollo Video Technology
425-483-7100
aprilj@avt-usa.com

Tom Cook
RH Strategic
206-264-0246
tcook@rhstrategic.com

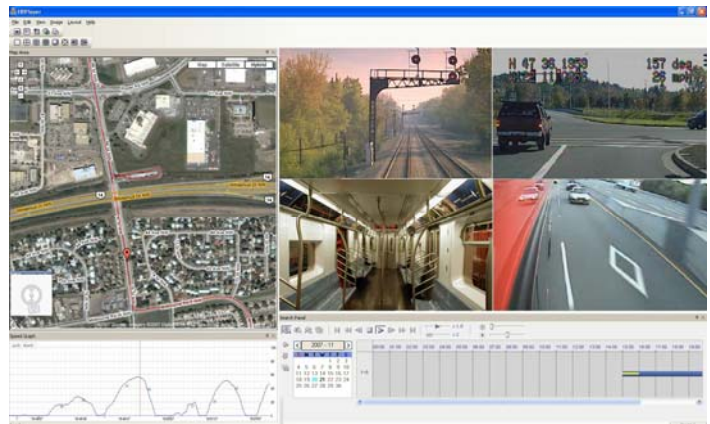
Live Surveillance Video from Public Transportation Vehicles a Reality

Apollo Video Technology Launches Real-Time Video and Mapping Interface

WOODINVILLE, Wash., Oct. 13, 2008 – Surveillance video from public transit vehicles can now be accessed in real time, through an interactive map that combines graphical route information with vehicle GPS data and video feeds. The breakthrough innovation is being launched by Apollo Video Technology (www.avt-usa.com).

Officials monitoring the speeds, routes, and ADA compliance of vehicles such as buses and trains can search an interactive map to locate a route, intersection, or speed threshold, and examine live or historical video feeds. The feature is contained in Apollo Video Technology's iSM™ (Interactive Speed and Mapping) interface within the Roadrunner Mobile Video System.

"The real time features of the enhanced iSM™ interface make it easy for anyone in a fleet control center to get a complete picture of their fleet's adherence to schedules, safety regulations, and ADA compliance, right down to the specific vehicle or train," said Rodell Notbohm, general manager at Apollo Video Technology. "The implementation of real-time video surveillance provides transit officials with a more accurate, efficient and complete tool for accessing and viewing video feeds."



Apollo Video Technology's enhanced iSM™ interface combines GPS enabled graphical route information with real-time video feeds.

The iSM™ interface provides searching capabilities based on location or speed with historical mapping location information, speed charts that provide graphical route information and now real-time video feeds. For example:

- **Public Transit Managers** can use the iSM™ interface to evaluate the current speeds of all city buses within a given geographic area, and check the live video feed of a bus that appears to be behind schedule.

-more-

- **Pupil Transit Managers** can use the iSM™ interface to ensure that bus routes are followed, students are picked up, and to check the live video feed if concerns arise.
- **Law Enforcement Agencies** can use the iSM™ interface to monitor traffic stops and police activity, collect comprehensive visual evidence with speed and location data and graphically display location, street and intersection names for assistance when locating fleeing suspects and discarded evidence.

In addition to the new iSM™ feature, the Roadrunner's updated software includes: enhanced network capabilities for scheduled and automatic system health checks, fleet-wide time synchronization, e-mail notification for events, camera obstructions and hard disk drive status, as well as the ability to send live video to a central location in the event of an emergency.

To learn more about the Roadrunner Mobile Video System or to view screen shots of the new iSM™ interface, please visit <http://www.apollovideotechnology.com/transit.htm>

About Apollo Video Technology

Apollo Video Technology (www.avt-usa.com) is a leading manufacturer of on-board and in-car digital surveillance systems for pupil and public transit, law enforcement, military, freight transport, fire and EMS applications. With government and private-sector installations throughout North America and worldwide, Apollo Video's Mil-Spec and SAE rated RoadRunner line of turnkey video and audio systems simplifies real-time video capture and reduces overall costs with exceptional quality, durability and easy offloading of video.