



# RoadRunner™ MRH

Video Surveillance Systems for Public Transit and Rail Applications

Designed specifically for use in mass transit and rail applications, the steel constructed MRH series digital video recorder (DVR) is Mil-Spec and SAE rated for proven durability and reliability in harsh mobile environments. Including license-free software and a 3-year warranty, the RoadRunner™ MRH DVR provides superior video quality in an easy-to-use system for years of reliable service and the lowest cost of ownership. Utilizing the same software as the RoadRunner™ MR series, the MRH DVR records up to 16 cameras with faster recording rates, higher resolution and compression ideal for networking and remote access.



## Highest Reliability, Lowest Cost of Ownership

Performing with little to no maintenance for years longer than other systems, the RoadRunner™ system is easier to maintain and more affordable. Utilizing H.264 compression, the system provides months of on-board storage and is optimized for user convenience featuring maintenance-free operation and system-wide remote updates. The system can be easily upgraded and expanded offering maximum value for growing applications and includes an optional built-in heater for dependable recording in all climates.

## Industry Leading Performance

Record up to 16 cameras simultaneously for full video and audio surveillance of all types of transit and rail vehicles. Utilizing the most advanced compression methods to record up to 480 images per second, the RoadRunner™ system delivers industry-leading recording speed, longer recording durations and exceptional video quality up to 4CIF resolution. Visit our website to view actual video clips.

## Advanced Networking Capabilities

Included and license-free software provides fleet-wide time synchronization, automated system health status checks, and email notification of system failures, camera obstructions and hard disk drive status. The system's call-back feature provides live video to a central station in an emergency. Apollo Video provides several robust software packages for downloading and archiving to provide seamless fleet-wide networking and system management.

## Secure Video Evidence

Video clips are watermarked and encrypted to ensure video is authentic and feature optional password protection to restrict viewing access. Software functions are password protected with access rights for up to 64 groups and 256 users.

## iSM™ (Interactive Speed & Mapping) Interface

The GPS option provides a map display of historical route location data and graphs of vehicle speed. By selecting a location on the map or a desired speed, synchronized video playback from that location or speed is instantly provided. The iSM™ Interface provides an easy method for the investigation of speed complaints, provides street names and geographical data for route information, passenger pick-up and drop-off locations as well as easy confirmation of ADA compliance.

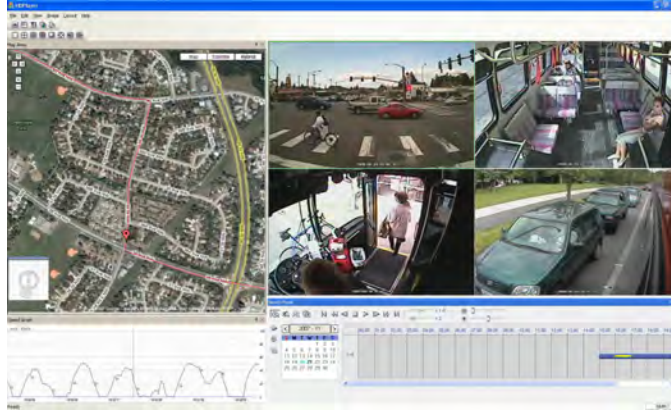
## Integrated System Management Software

The license-free Remote Administration Software (RASplus) is included at no additional charge. RASplus provides easy system management and wireless access to first responders, law enforcement and/or transit personnel. With the ability to view up to 64 cameras from up to 16 different vehicles / sites, RASplus provides system-wide, easy to use access and management for entire fleets and facilities.



## RASplus™ and HDPlayer™ Software

- Included at no additional charge, license-free for unlimited users
- Provides remote viewing of multiple vehicles and sites simultaneously from virtually any location; Simultaneously transmit live and playback video from hundreds of video sources to multiple users
- Administrative functions provide fleet-wide system updates, programming and time synchronization
- System settings are secure with password protected access-rights for up to 64 groups and 256 users
- Call-back feature provides live images to a central location in emergency events
- Health report status and email notification for events, failures, hard drive status, camera obstructions, etc.
- Create secure tamper-proof video clips with optional password protection to restrict viewing access
- Easy search tools provide instant access to recorded data for searching by event or time and date; Add the optional GPS for searching by location or speed, the iSM™ (Interactive Speed and Mapping) Interface features historical location and speed data providing intuitive vehicle tracking data



The RoadRunner™ system features several camera options designed for maximum video coverage for all interior and exterior mounting in all vehicle types. Options include built-in microphones, exterior and vandal-proof housings, low-light recording and more. Visit our website for a complete listing of cameras, wireless LAN, Cellular, GPS, accelerometer and other options and accessories:

[www.avt-usa.com](http://www.avt-usa.com)

## MRH16 Series

Records up to 16 Cameras + Audio Recording

## MRH12 Series

Records up to 12 Cameras + Audio Recording

## MRH8 Series

Records up to 8 Cameras + Audio Recording

### Recording Duration Chart

Drive Size & Type	120 ips	240 ips	480 ips
2.0TB HDD:	1,506 hours	752 hours	375 hours
1.5TB HDD:	1,129 hours	565 hours	283 hours
1.0TB HDD:	752 hours	376 hours	188 hours
750GB HDD:	564 hours	282 hours	141 hours
500GB HDD:	375 hours	188 hours	94 hours
250GB HDD/SSD:	187 hours	94 hours	47 hours

Recording durations are based on standard quality and resolution. For complete recording duration estimates, please visit our website: [www.avt-usa.com](http://www.avt-usa.com)



14148 NE 190th Street - Woodinville, WA 98072  
Toll Free: 888-AVT-USA1; Tel: 425-483-7100; Fax: 425-483-7200  
[sales@avt-usa.com](mailto:sales@avt-usa.com) | [www.avt-usa.com](http://www.avt-usa.com)

### Typical System Configuration

