



## Industry Leading Performance

Utilizing the most advanced compression methods to record each camera at real time, the RoadRunner™ system delivers industry-leading recording rates, longer recording durations and exceptional video quality.

## Secure Video Clips

Video clips feature optional password protection, watermarking and 128-bit encryption to ensure video is authentic and secure. System settings are secured with password protected access-rights for up to 64 groups and 256 users.

## Simultaneous Recording

The system is configured to automatically begin recording, eliminating user error and continues to record even during playback, archiving and performing administration functions.

## Simple, Turn-key Installation

The system includes all the wiring and cables required, providing the option for easy do-it-yourself installation.

## Lowest Cost of Ownership

The RoadRunner™ system can be easily upgraded and expanded. Offers a 3-year warranty, a lifetime of software updates, months of data storage and years of maintenance-free operation.

## Included Software for Easy System Management

License free and included software allows for easy fleet-wide system updates. The optional GPS includes the **iSM™ (Interactive Speed and Mapping) Interface** featuring historical mapping and speed graphs. By selecting a location on the map or a desired speed, video from that location or speed is instantly provided. With automatic health-system checks and email notification for events, hard drive status and failures, the RoadRunner™ system provides easy system management.

# Rugged • Reliable • RoadRunner™

## In-Car Digital Surveillance Systems



The RoadRunner™ Digital Video Recorder delivers the highest quality video and audio recording and is backed by an industry-leading 3-year warranty. Designed and manufactured specifically for use in mobile applications, the RoadRunner™ system will deliver years of high quality video recording at the lowest cost of ownership. Featuring user-friendly, license-free software the system is intuitive, easy to use and designed to provide the video that you need, when you need it.

Utilizing the optional GPS feature, you can search for video based on location or speed with historical mapping location information and speed charts that provide graphical route and historical speed information. Simply select a point on the map or a selected speed for instant video access from that location or speed. The **iSM™ (Interactive Speed and Mapping)** interface provides street names and geographical data for route and stop information.



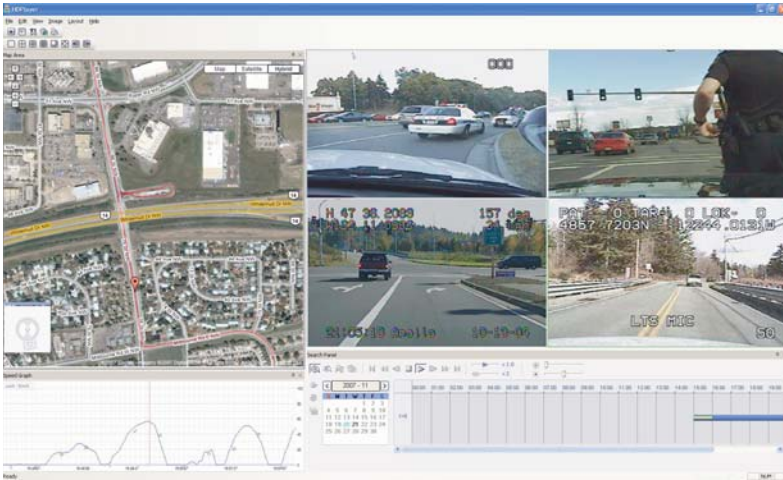
### iSM™ Interface

- Collect comprehensive visual evidence with speed and location data
- Graphically display location, street and intersection names for assistance locating fleeing suspects and discarded evidence
- Provides video, location and speed evidence to supplement report writing
- Illustrates road topography and landmarks related to traffic stops and police activity



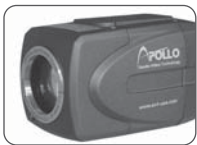
# Rugged • Reliable • RoadRunner™

In-Car Digital Surveillance Systems



## RASplus™ and HDPlayer™ Software

License-Free, included at no additional charge • Remote viewing from virtually any location • View multiple vehicles and sites simultaneously, up to 64 cameras from up to 16 different sites • Fleet-wide updates, programming and time synchronization • Automatic health report status and emailed notification for events, system failures, hard drive status and camera obstructions • Call-back feature provides live images to a central location in the event of an emergency • Simultaneously transmit live and playback video from hundreds of video sources to multiple users • Easy search tools provide instant access to recorded data; search by event or time and date • Utilize the GPS option for searching by location or speed; The new iSM™ (Interactive Speed and Mapping) Interface features historical location and speed data providing intuitive vehicle tracking information • Create secure tamper-proof video clips with optional password protection to restrict viewing access • System settings are secure with password protected access-rights for up to 256 users



**RR-CZ26**  
 • 26x Optical Zoom  
 • 10x Digital Zoom  
 • Day/Night Viewing

**RR-CIR1**  
 • Color Interior Camera  
 • Built-in Microphone  
 • IR Illumination



**RR-AW24GHZ**  
 • 2.4GHz Wireless Audio  
 • 40 Channels  
 • 800 foot range

## RR-LE24 System



**RR-HDP**  
 Hard Disk Player / Docking Station  
 Used to connect the removable hard disk drive to a PC for easy viewing and archiving (for use system-wide)

- Includes:
- Ruggedized Digital Video Recorder
  - Custom Installation Wiring Kit
  - License-Free RASplus and HDPlayer Software
  - Removable Hard Disk Drive (250GB, 500GB, 750GB, 1.0TB or 1.5TB)  
Or Solid-State Drive (60GB, 120GB or 250GB)
  - 26x Optical + 10x Digital Zoom Color Camera
  - Windshield Camera Mount (Glue Mount or Removable Suction Cup)
  - 2.4Ghz Wireless Audio Kit

**3 Year**  
 DVR Warranty

Customize the system with several upgrade and accessory options including displays, GPS and wireless capabilities, additional cameras, etc. Visit [www.avt-usa.com](http://www.avt-usa.com) for a complete listing of system options and accessories.

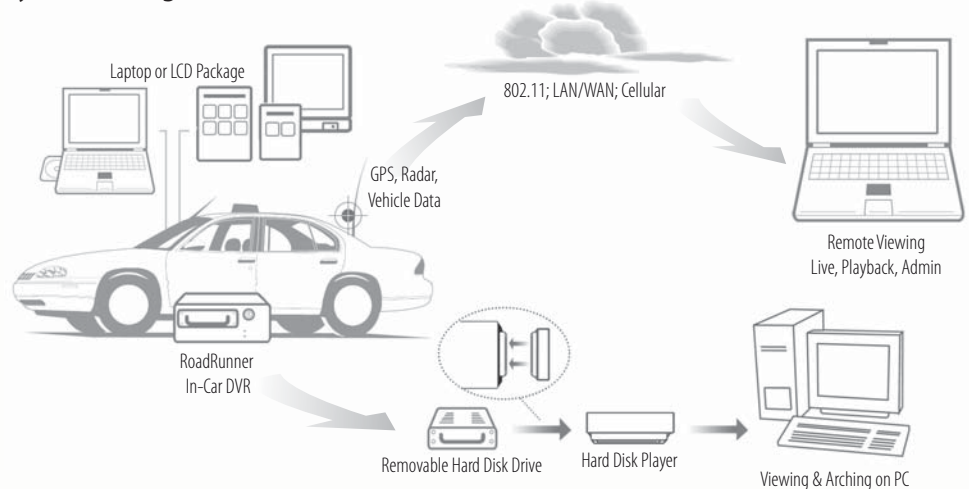
### Recording Duration Chart:

Drive Type* & Size:	Recording 30 ips	Recording 120 ips
1.5TB HDD	4,517 hours	1,129 hours
1.0TB HDD	3,010 hours	752 hours
750GB HDD	2,257 hours	564 hours
500GB HDD	1,503 hours	375 hours
250GB HDD/SSD	750 hours	187 hours
160GB HDD	478 hours	119 hours
120GB SSD	358 hours	89 hours
60GB SSD	177 hours	44 hours

\*HDD = Hard Disk Drive; SSD = Solid-State Drive; ips = images per second  
 Recording durations are based on standard quality. For complete recording duration estimates, please utilize the HDD Calculator tool: [www.avt-usa.com](http://www.avt-usa.com)

Features and specifications are subject to change without notice

### System Configuration:



14148 NE 190th Street  
 Woodinville, WA 98072

[www.avt-usa.com](http://www.avt-usa.com)

Tel: 888-AVT-USA-1 / 425-483-7100

Fax: 425-483-7200

Video Clips, Manuals, Brochures...