



RoadRunner 4K™

Ultra High Definition Mobile Recording System

The RoadRunner 4K system delivers the clearest, highest quality video and optimal network performance in any mobile application. With four times the resolution of standard high definition video, RoadRunner 4K provides superb video clarity and better coverage to support advanced analytics. Providing the clearest video evidence, the RoadRunner 4K Mobile Recorder is the most user-friendly and technologically advanced video surveillance solution for intelligence, safety and efficiency in transit.



UNPRECEDENTED QUALITY

4K video delivers the clearest, highest quality video, supporting advanced analytics. Excellent zoom capabilities capture license plates and other details with superior clarity.

SUPERIOR FLEXIBILITY

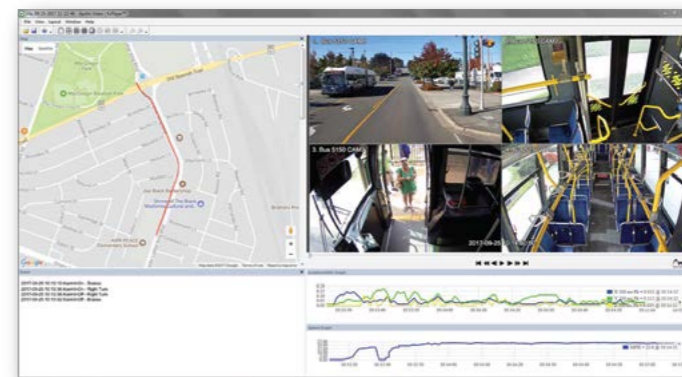
Supporting complete fleets of all vehicle types, the RoadRunner 4K system is available in several compatible and interchangeable formats for recording 4K video with 4, 8, 12 or 16 IP cameras.

RUGGED AND RELIABLE

Designed and manufactured specifically for transit applications, the RoadRunner Recorder is Mil-Spec and SAE rated for proven durability and reliability in harsh mobile applications.

EXCEPTIONAL NETWORK CAPABILITIES

The RoadRunner 4K Recorder provides excellent video streaming capabilities and faster network transfer through superior H.265 compression; is wireless-ready for use with any TCP/IP based network, and is compatible with existing wireless 802.11 and cellular devices.



RoadRunner 4K™ Ultra High Definition Mobile Recording System

Designed specifically for use in mass

transit and rail applications, the

RoadRunner 4K Mobile Video Recorder

is Mil-Spec and SAE rated for proven

durability and reliability in harsh mobile

environments. The system is easy to use

and install, and provides superior 4K

video enabling improved analytics and

clear identification.

With support for PoE digital

and analog cameras, the RoadRunner

4K system supports up to 16 cameras

and 18 audio inputs.

Standard Features:

- 16, 12, 8 or 4 camera models; 18 audio inputs
- 4K recording up to 3840 x 2160 pixels — adjustable for each camera
- Recording rates up to 480 images per second at 4K resolution, and an additional 480 ips at 720p HD resolution
- PoE digital and analog camera support
- Months of on-board recording with removable storage drives up to 10TB
- Greater image quality for advanced video analytics
- Built-in 3-axis accelerometer
- The interactive speed and mapping interface provides easy searching supported by built-in or external GPS receiver
- Mil-Spec and SAE rated for shock and vibration
- Integrated event switch with "heartbeat" health indicator
- License-Free RsM™ (RoadRunner Secure Management) Software is included for easy remote viewing, playback and administration; and is backward compatible, providing a seamless, fleet-wide solution
- Video is encrypted to ensure authenticity
- Optional password protection and embedded player provides secure and efficient review of video
- Wireless-ready for use with any TCP/IP based network
- Optional embedded 802.11ac WiFi capabilities allows up to 64 user definable Geo-Fence Client/AP switching modes
- Fully compatible with mSET (Managing Safety and Efficiency in Transit) Software for fleet-wide management, advanced chain of custody reporting, health monitoring and more



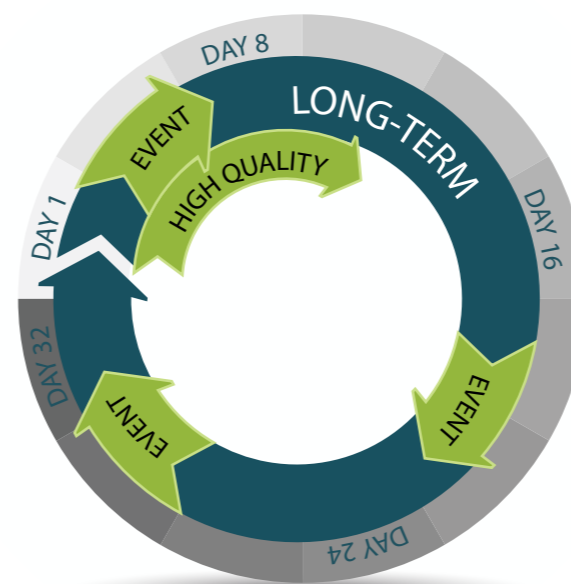
IDEAL FOR ALL VEHICLE TYPES

The RoadRunner 4K system is designed for maximum video coverage on all vehicle types. All RoadRunner systems are fully compatible, interchangeable and utilize the same software — regardless of the number of cameras supported, providing an ideal fleet-wide solution.



Optimal Quality Recording:

Provides the perfect balance of high definition recording and long-term storage. High quality 4K and 720p video streams are recorded simultaneously, ensuring the highest quality video is available for critical incidents while maintaining the longest onboard recording duration. Storage is completely adjustable and customizable to your recording needs — a slide bar automatically calculates estimated storage for both high quality and long-term recording streams.



Captures short-term 4K resolution video for critical events at maximum resolution, delivering the clearest video for improved analytics processes and essential video evidence.



Simultaneously records 720p video for long-term video storage to easily fulfill data retention requirements.

RsM (RoadRunner Secure Management) Software™

Seamless administration, remote viewing and playback of RoadRunner Recorders and DVRs.

Fleet-Wide Administration:

- Fleet-wide system updates and programming
- Health reports and email notification for events, failures, hard drive status, camera obstruction and more
- Easily export configuration information for use with other machines and /or remote sites
- Compatible with the latest RoadRunner recorders for fleet-wide compatibility and easy management

Remote Viewing:

- View multiple vehicles and sites simultaneously from virtually any location
- Simultaneously transmit live and playback video from hundreds of video sources
- Call-back feature provides live images to a central location during emergency events

User-Friendly Search Tools:

- Search by time and date or use the advanced tools for easy searching using the interactive calendar, event, location and/or vehicle speed
- Location-based search tools feature historical map location and speed data

Secure Video Clips:

- Create secure, tamper-proof video clips with optional password-protection to restrict viewing access
- Archived video clips are encrypted and include an embedded player - no downloads or software required for viewing

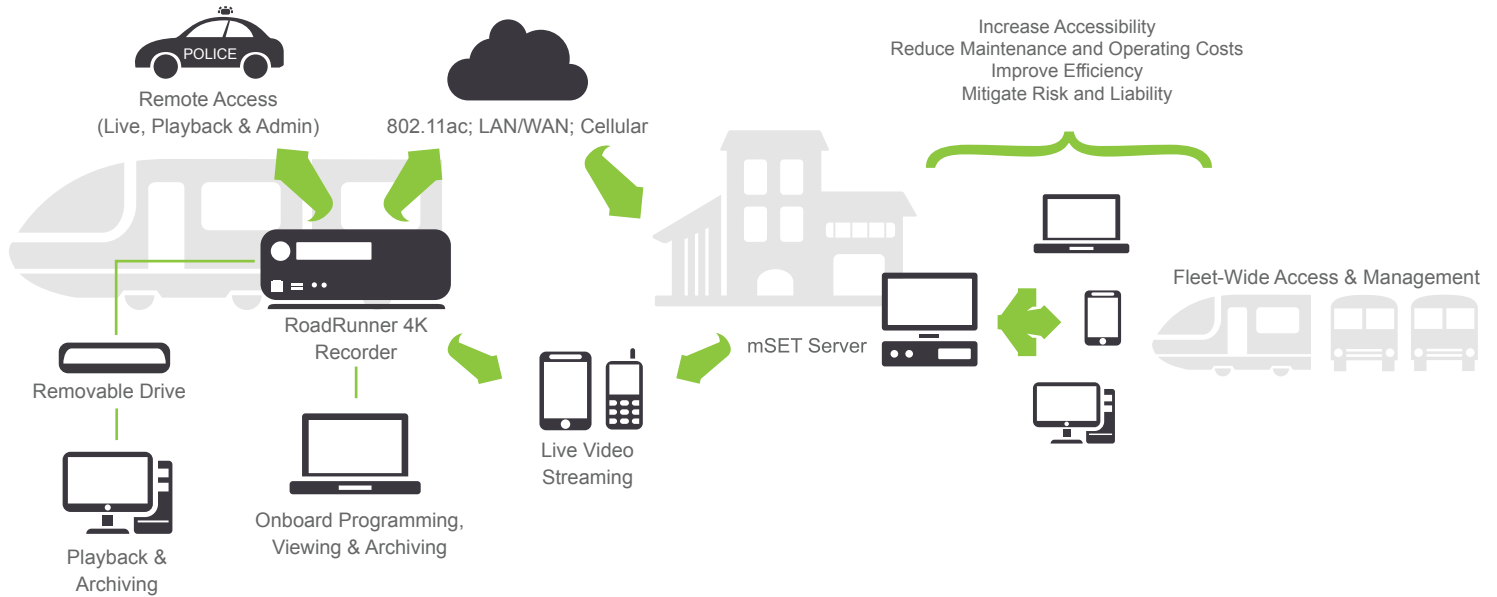
Customizable:

- All functions are password protected with adjustable access-rights for up to 256 users and 64 groups
- Auto-Connect and "Favorites" features provide instant access to most frequently viewed sites
- Adjustable display and multi-screen support provides customizable viewing panes

Included:

- No additional charge
- License-free for unlimited users
- Lifetime updates at no additional charge

System Diagram



Interior Cameras

**All HD cameras are compatible with RoadRunner 4K Recorders*

- Forward-Facing Camera, 4K | RR-4KCF1; RR-4KCF2
- Forward-Facing Camera, HD | RR-HDCF1; RR-HDCF2
- Auto-Connect
- Fully Adjustable Mount
- Varifocal Lens



- Forward-Facing Dome, RR-HDCTDF100**
- Auto-Connect
 - Vandal-Resistant

360° Camera | RR-HDC360°

- Auto-Connect
- IR Cut Filter for Day/Night Operation
- Vandal-Resistant



- Interior Tapered Dome, RR-HDCTDIRA**
- Auto-Connect
 - IR Cut Filter for Day/Night Operation
 - Vandal-Resistant
 - Built-In Microphone

Exterior Cameras

**All HD cameras are compatible with RoadRunner 4K Recorders*

- Wedge Camera, RR-HDCW1
- Auto-Connect
- Vandal-Resistant
- Varifocal Lens
- IP66 Outdoor Rated



- Exterior Tapered Dome, RR-HDCTD**
- Auto-Connect
 - Vandal-Resistant
 - IP68 Outdoor Rated

RoadRunner Wireless Solutions

Cellular | RR-HDWC400

- LTE-Advanced Modem (600Mbps throughput)
- 802.11a/b/g/n/ac (WAVE2): 4x4 MU-MIMO

Cellular | RR-HDWC340

- LTE-Advanced Modem (600Mbps throughput)
- 802.11a/b/g/n/ac (WAVE 2); 2x2 MIMO

RR-HDW4K | 802.11ac Wi-Fi Embedded Module

- For agencies seeking a RoadRunner 4K Recorder with Wi-Fi, but not cellular connectivity
- High Powered 5GHz 802.11ac 2x2 MIMO embedded Module



Accessories

**All HD accessories are compatible with RoadRunner 4K Recorders*

- Removable 4K Hard Disk Drive (2.0TB - 10TB) | RR-4K****HDD
- Removable 4K Solid State Drive (2.0TB) | RR-4K2000SSD
- Drive Adapter | RR-HDHDA
- GPS Antenna | RR-HDAGPS
- External Accelerometer | RR-HDVA1
- Uninterruptible Power Supply | RR-HDUPS-S; RR-HDUPS-B
- Power Loss Data Protector | RR-HDPLDP
- 8" LCD Display | RR-HDLCD8; 10" LCD Display | RR-HDLCD10
- 15" LCD Display | RR-HDLCD15; 19" LCD Display | RR-HDLCD19

RoadRunner 4K™

POLLO
Apollo Video Technology

LUMINATOR
TECHNOLOGY GROUP

24000-35th Avenue Southeast - Bothell, WA 98021
Toll Free: 888-AVT-USA1; Tel: 425-483-7100; Fax: 425-483-7200
sales@apollovideo.com | www.apollovideo.com

Features and Specifications are Subject to Change without Notice
v2.1/1018